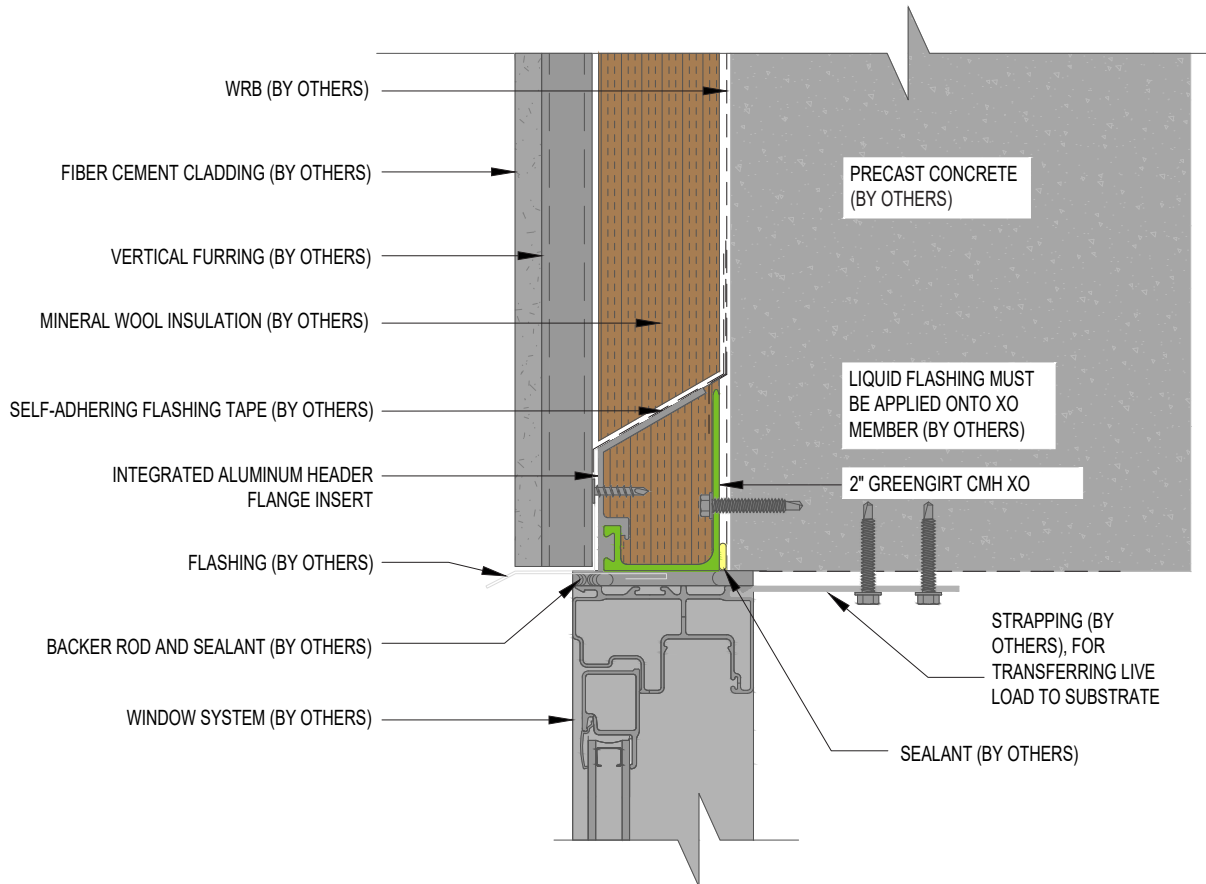




ADVANCED  
ARCHITECTURAL  
PRODUCTS

NOTE: DETAILS ARE PROVIDED FOR INFORMATION ONLY, AND ARE SUBJECT TO CHANGE WITHOUT NOTICE SPECIFIC PROJECT ENGINEERING BY OTHERS WILL ADDRESS ATTACHMENT SPACING, ORIENTATION AND LOADING. CONTACT ADVANCED ARCHITECTURAL PRODUCTS FOR FURTHER DETAILS, AND TO INQUIRE ABOUT UPDATES AND REVISIONS.



**Note:**

The strapping shown attaching to the substrate behind the window is carrying the wind load on the window. For additional options involving A2P carrying the wind loads on the window and aluminum flange insert options, see page 4 or contact A2P Engineering for project-specific guidance at [GreenGirt.com](http://GreenGirt.com) or (269) 355-1818.

GreenGirt CMH XO™

SUBSTRATE: PRECAST

INSULATION: MINERAL WOOL

GREENGIRT CMH XO SIZE: 2 INCH

FLANGE: INTEGRATED ALUMINUM  
HEADER FLANGE

DEAD LOAD CLIP: --

## HEADER DETAIL

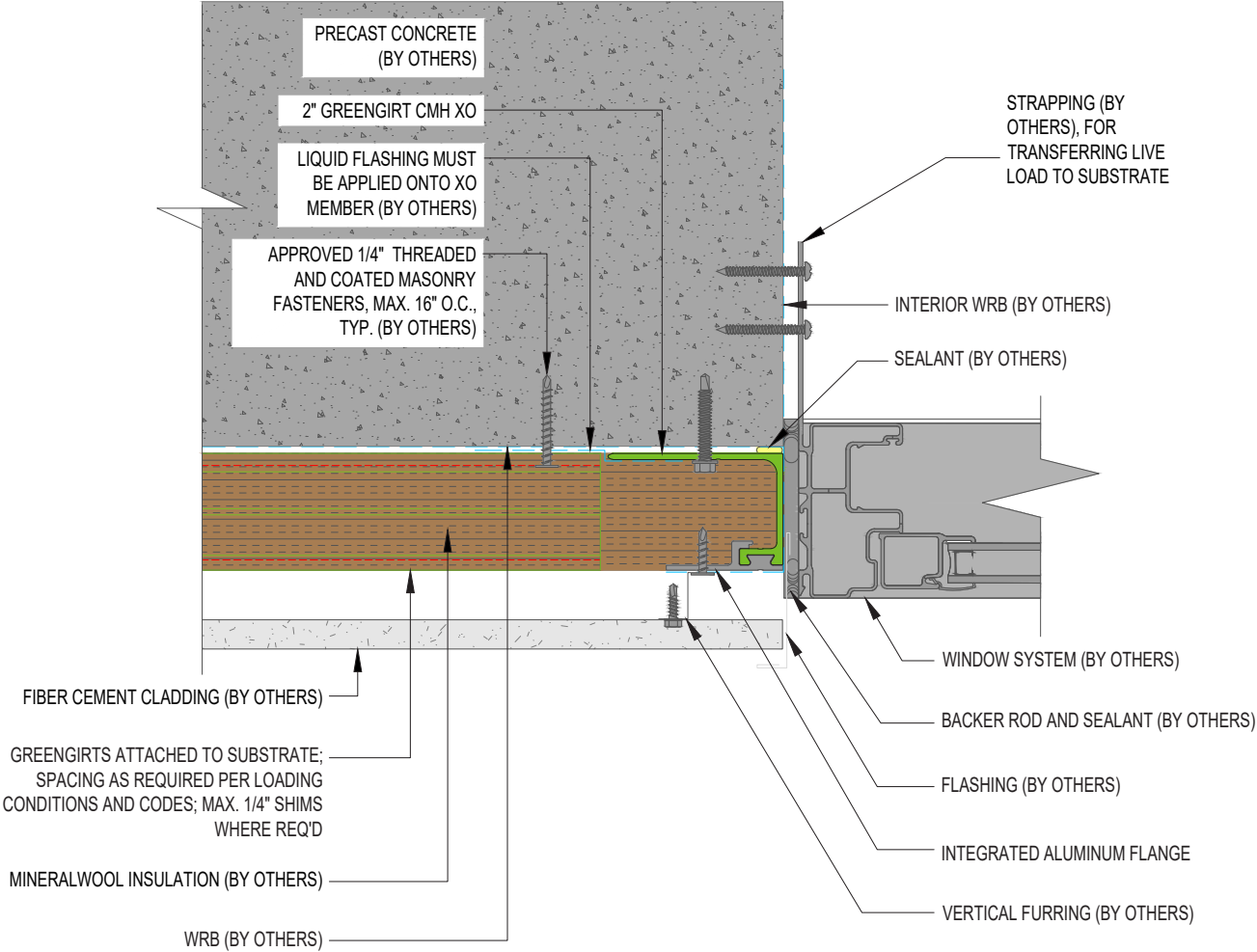
NOT TO SCALE

[GreenGirt.com](http://GreenGirt.com)


959 Industrial Drive, Allegan, MI 49010 • (269) 355-1818

Patents: [GreenGirt.com/patents/](http://GreenGirt.com/patents/)

NOTE: DETAILS ARE PROVIDED FOR INFORMATION ONLY, AND ARE SUBJECT TO CHANGE WITHOUT NOTICE SPECIFIC PROJECT ENGINEERING BY OTHERS WILL ADDRESS ATTACHMENT SPACING, ORIENTATION AND LOADING. CONTACT ADVANCED ARCHITECTURAL PRODUCTS FOR FURTHER DETAILS, AND TO INQUIRE ABOUT UPDATES AND REVISIONS.



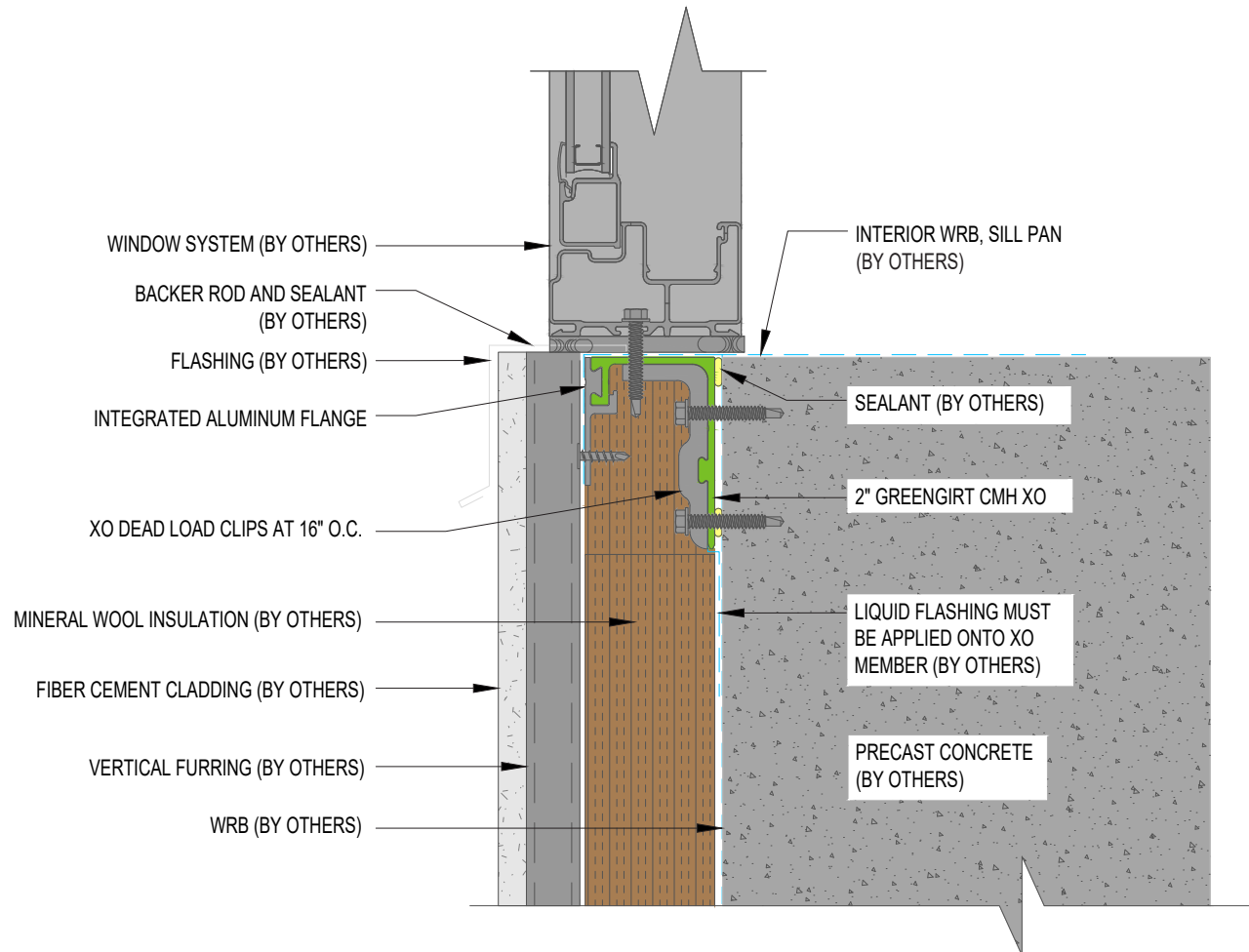
**Note:**  
 The strapping shown attaching to the substrate behind the window is carrying the wind load on the window. For additional options involving A2P carrying the wind loads on the window and aluminum flange insert options, see page 4 or contact A2P Engineering for project-specific guidance at [GreenGirt.com](http://GreenGirt.com) or (269) 355-1818.

	SUBSTRATE: PRECAST	INSULATION: MINERAL WOOL
	GREENGIRT CMH XO SIZE: 2 INCH	
	FLANGE: INTEGRATED ALUMINUM WIDE FLANGE	DEAD LOAD CLIP: --
	<b>JAMB DETAIL</b> NOT TO SCALE	



ADVANCED  
ARCHITECTURAL  
PRODUCTS

NOTE: DETAILS ARE PROVIDED FOR INFORMATION ONLY, AND ARE SUBJECT TO CHANGE WITHOUT NOTICE SPECIFIC PROJECT ENGINEERING BY OTHERS WILL ADDRESS ATTACHMENT SPACING, ORIENTATION AND LOADING. CONTACT ADVANCED ARCHITECTURAL PRODUCTS FOR FURTHER DETAILS, AND TO INQUIRE ABOUT UPDATES AND REVISIONS.



**Note:**

For additional dead load clip and aluminum flange insert options, see page 4 or contact A2P Engineering for project-specific guidance at [GreenGirt.com](http://GreenGirt.com) or (269) 355-1818.

GreenGirt CMH XO™

SUBSTRATE: PRECAST

INSULATION: MINERAL WOOL

GREENGIRT CMH XO SIZE: 2 INCH

FLANGE: INTEGRATED ALUMINUM  
WIDE FLANGE

DEAD LOAD CLIP: ALUMINUM

## SILL DETAIL

NOT TO SCALE

[GreenGirt.com](http://GreenGirt.com)

959 Industrial Drive, Allegan, MI 49010 • (269) 355-1818

Patents: [GreenGirt.com/patents/](http://GreenGirt.com/patents/)

# GreenGirt CMH XO™

GreenGirt CMH XO supports a wide range of insulation, cladding, and window configurations. The system is available with multiple integrated flange and dead load clip options to accommodate the specific requirements of each assembly.

## Integrated Flange Options *(for integration on header, jamb, and sill)*



**Aluminum Header Flange**  
*(see page 1)*

Assists with weatherproofing at window header. Available in lengths to match GreenGirt CMH XO base depth.



**Aluminum Header Spacer Flange**

½" bump-out header flange for weatherproofing at windows.



**Aluminum Wide Flange**  
*(see pages 2 & 3)*

Provides additional cladding attachment if necessary.



**Aluminum Wide Spacer Flange**

Provides additional cladding attachment with ½" bump-out when needed.



**Aluminum Mini Flange**

Low-profile GreenGirt CMH XO base closure.



**Aluminum Mini Spacer Flange**

½" low-profile GreenGirt CMH XO base closure.



**Steel Metal Wrap**

Low-profile GreenGirt CMH XO base closure.

## Dead Load Clip Options *(for integration on sill)*



**Aluminum Dead Load Clip**  
*(see page 3)*

Carries window dead load at sill; attached via integral rail. Available in 3" and 6" lengths.



**12 ga. Stainless Steel Dead Load Clip**

Carries window dead load at sill. Available in 3" and 6" lengths.



**1/4" Stainless Steel Dead Load Clip**

Carries window dead load at sill. Available in 3" and 6" lengths.

## Additional Accessories



**2" x 2" Steel Self-Sealing Anchor Plate**

For attachments into jambs and header bases; includes "self-sealing" material.

For more information about the GreenGirt CMH XO™ system or for project-specific guidance, contact A2P Engineering at [GreenGirt.com](https://www.GreenGirt.com) or (269) 355-1818.



[GreenGirt.com](https://www.GreenGirt.com)

959 Industrial Drive, Allegan, MI 49010 • (269) 355-1818

Patents: [GreenGirt.com/patents/](https://www.GreenGirt.com/patents/)